

Proposed
New Elementary
School Attendance
Zones



Timeline

- Effective for the 2024-2025 school year (August 2024)
 - Sardis Elementary to Lanier Elementary
 - Myers Elementary to Sugar Hill Elementary
 - Riverbend Elementary & White Sulphur Elementary to Sandra Dunagan Deal Elementary
 - Sugar Hill Elementary to Tadmore Elementary

Timeline

- Effective for the 2025-2026 school year (August 2025)
 - McEver Elementary to Sardis Elementary
 - Oakwood Elementary to Martin Elementary
- Parents may choose to move their children to Sardis/Oakwood for the 2024-2025 school year (August 2024).
 - Parents must provide transportation for the 2024-2025 school year.

Grandfathering Options

- If your address has been rezoned to a different elementary school, you have the option to keep your child or children enrolled at their current school.
- If your upcoming kindergartener or 1st grader has a currently enrolled sibling, they can also enroll.
- Transportation will not be provided to and from school for students who do not live in the new attendance zones.
- Parents/Guardians are responsible for transportation to and from school.

Grandfathering process

- Students whose addresses are rezoned will automatically be enrolled in their new school zone for fall 2024 (or fall of 2025), unless parents/guardians complete a form to request to stay at current school.
- To request that your child be grandfathered to remain enrolled in their current school and/or to request an upcoming kindergartener or 1st grader attend the current school, complete request by June 15, 2024 (or 2025).

Impact on Middle or High School Attendance Zones

- None of these proposed changes will alter your child's current track to attend middle school and high school.
- For example: If you currently reside in the attendance zone assigned to the East Hall cluster, your child will still attend East Hall Middle School and then East Hall High School.

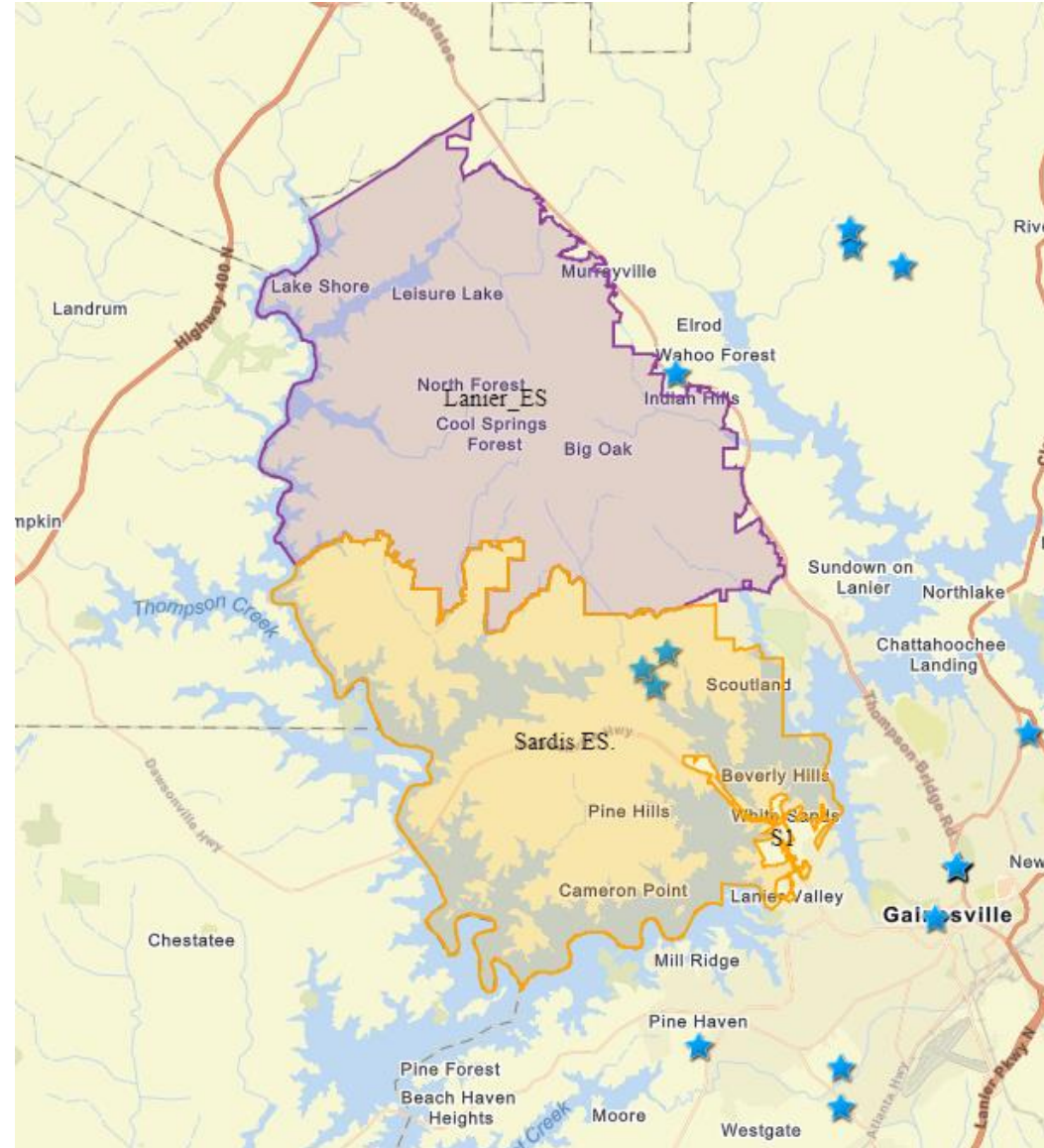


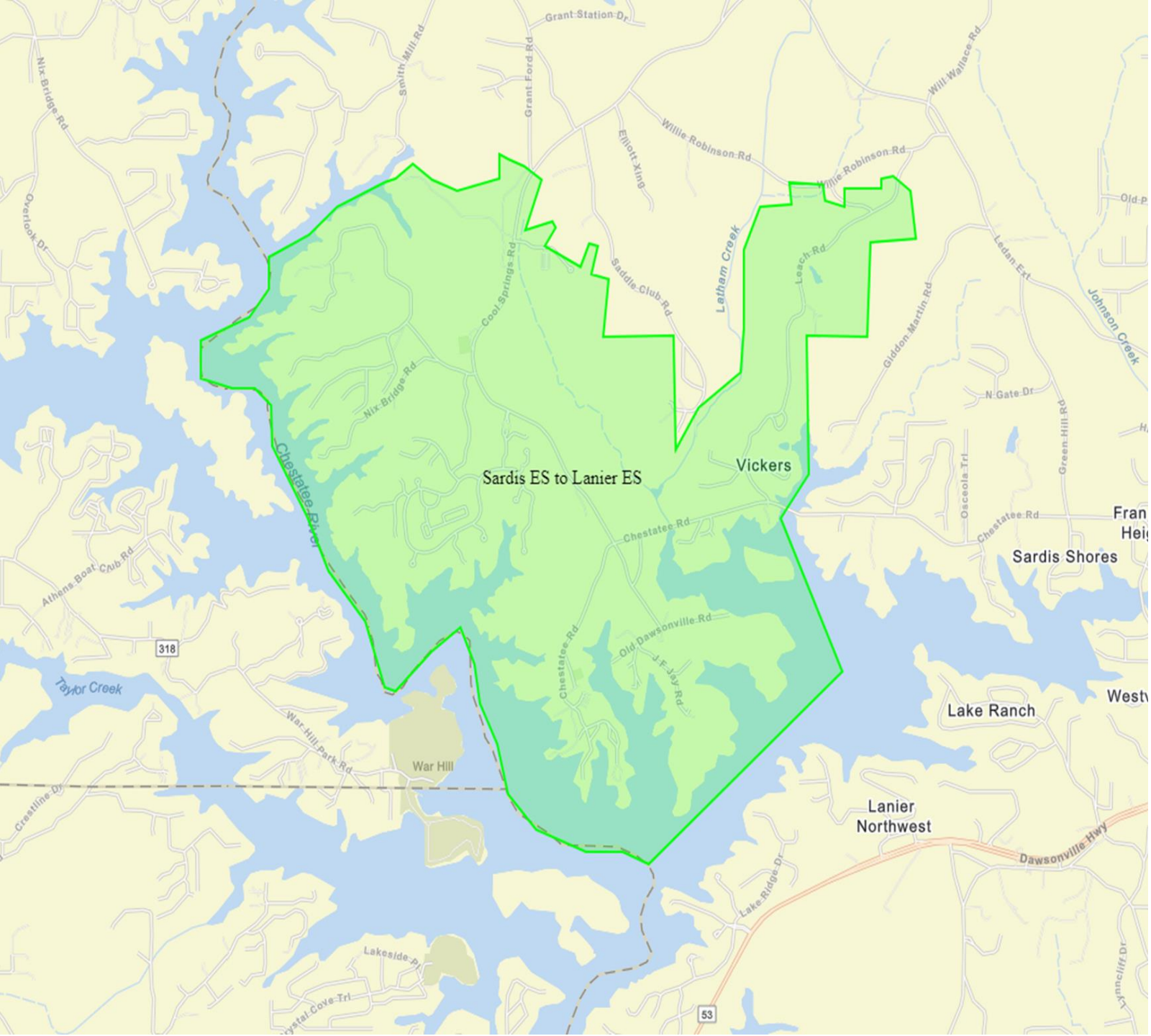


Effective 2024-2025 School Year



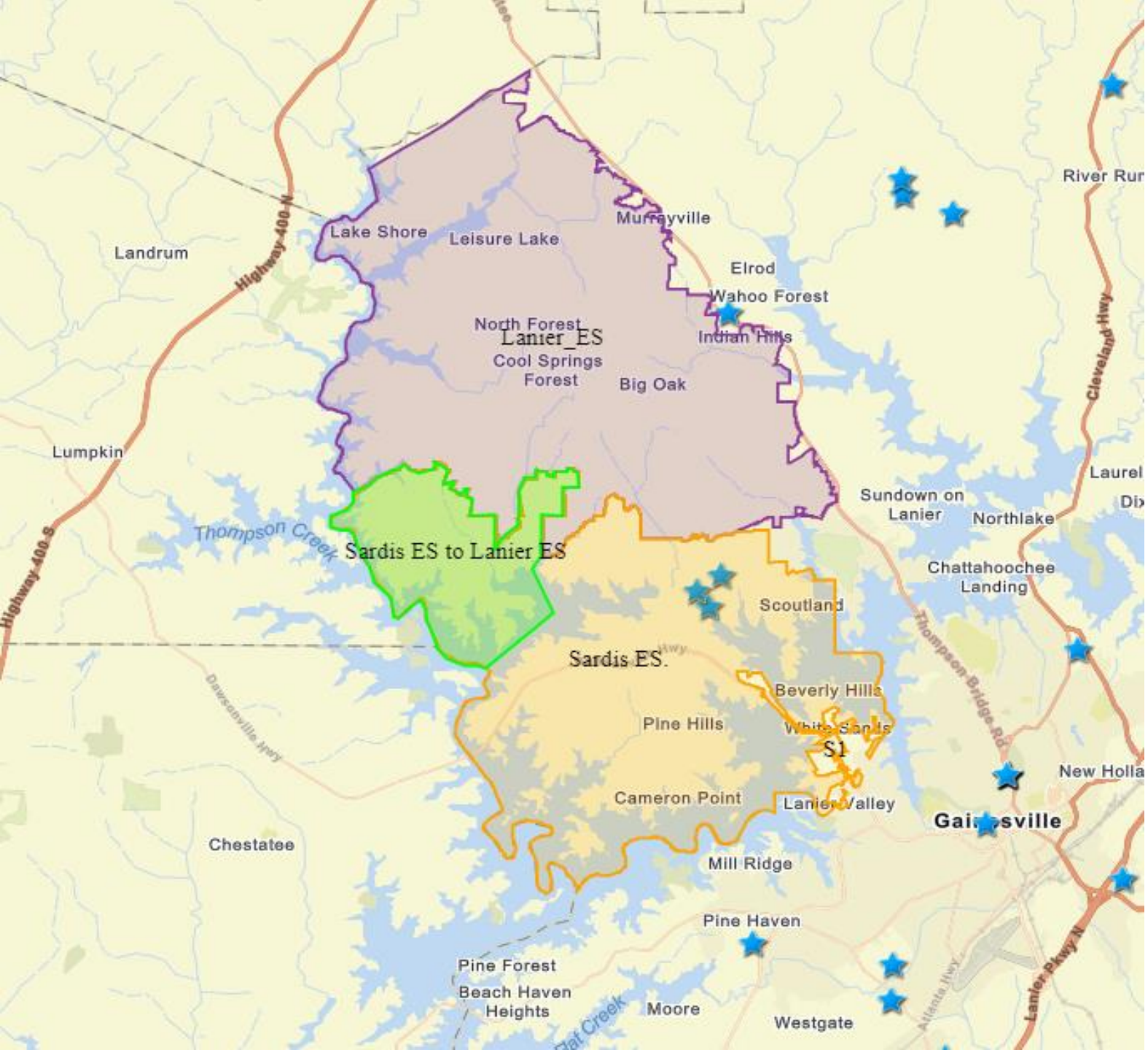
Current Sardis Elementary and Lanier Elementary School Student Attendance Zones





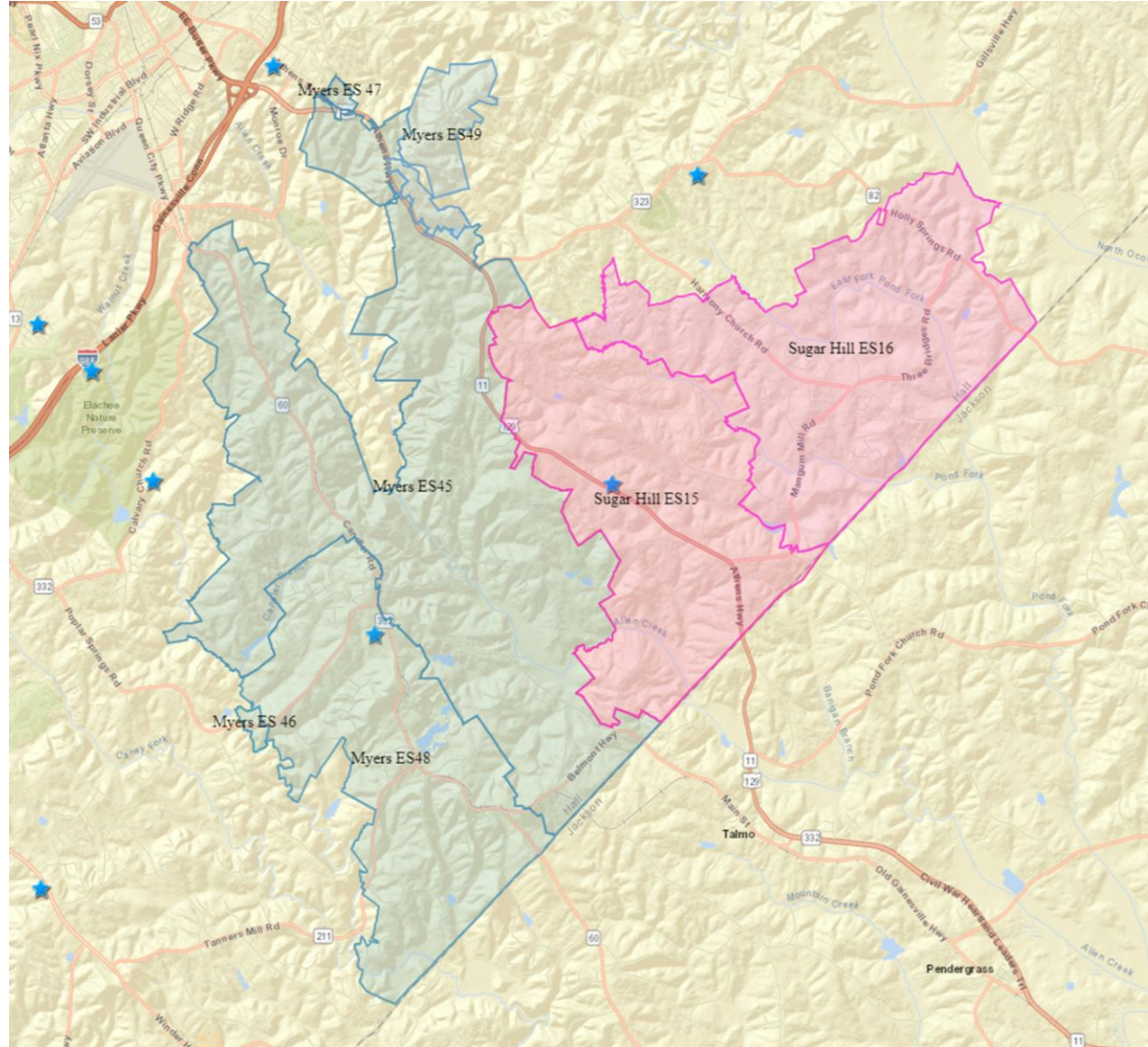
41 Students from Sardis Elementary to Lanier Elementary

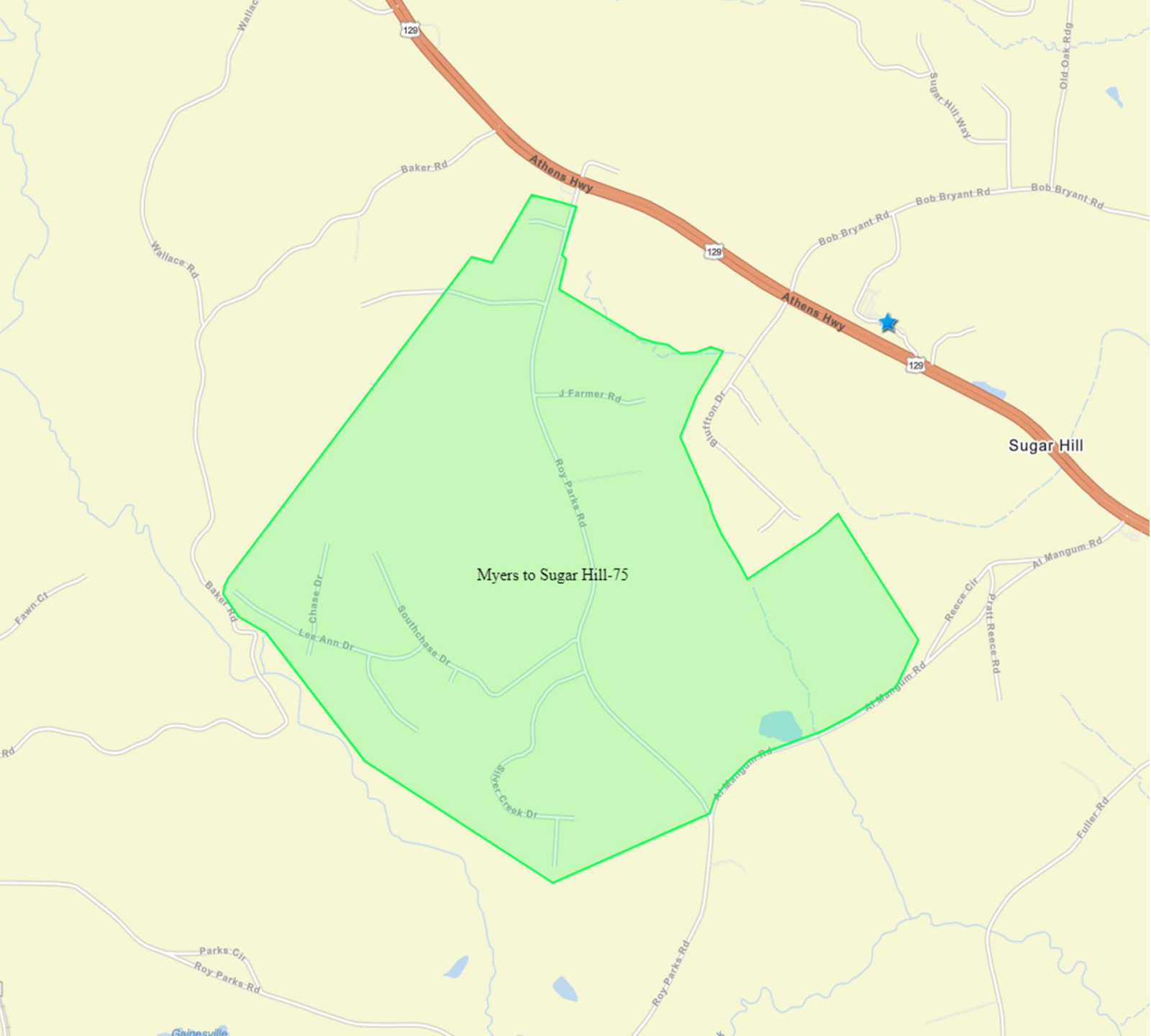
- Lanier ES Capacity: 788
- Lanier ES Current Enrollment: 549



New Sardis Elementary and Lanier Elementary School Attendance Zones

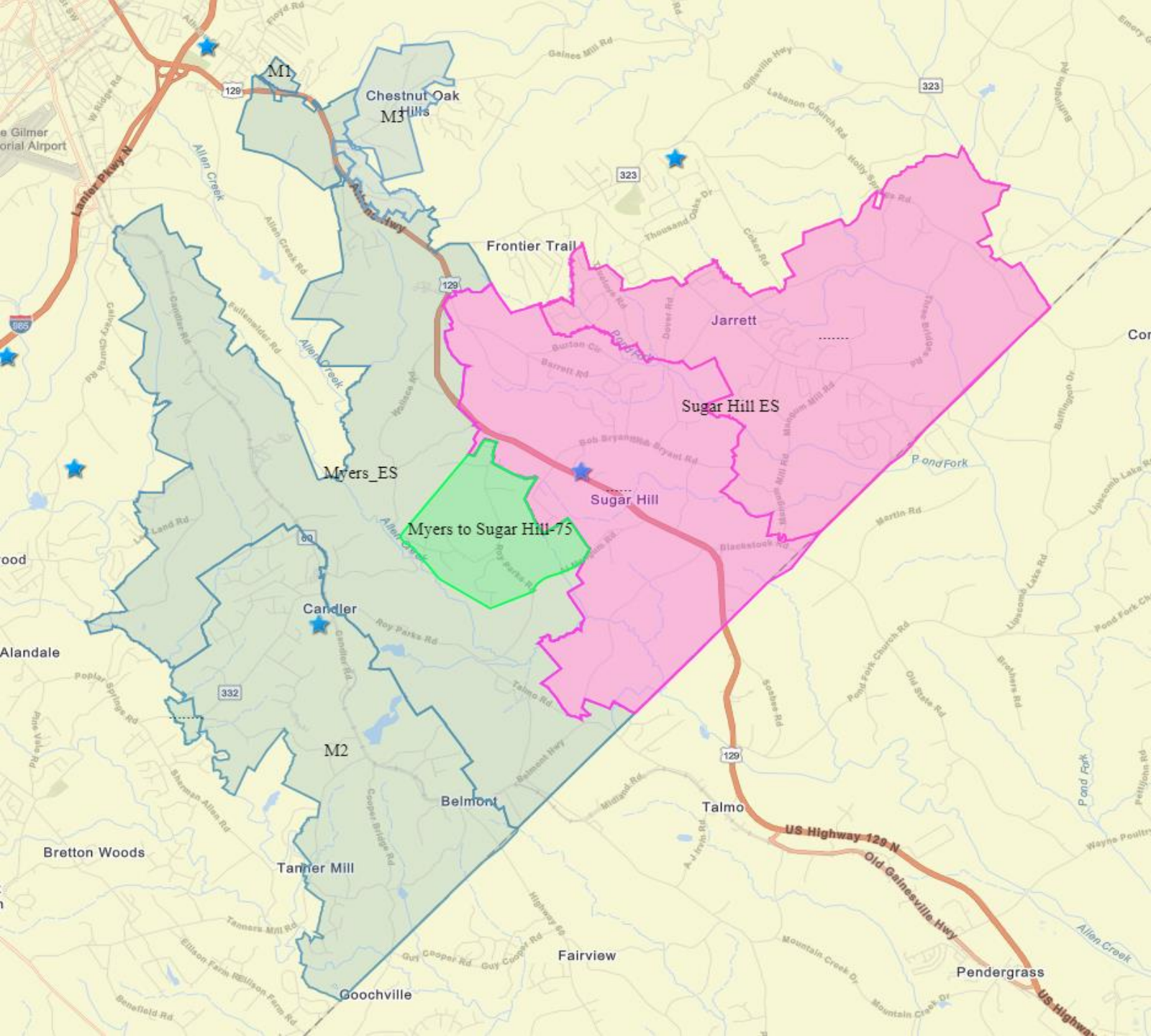
Current Myers Elementary and Sugar Hill Elementary School Student Attendance Zones





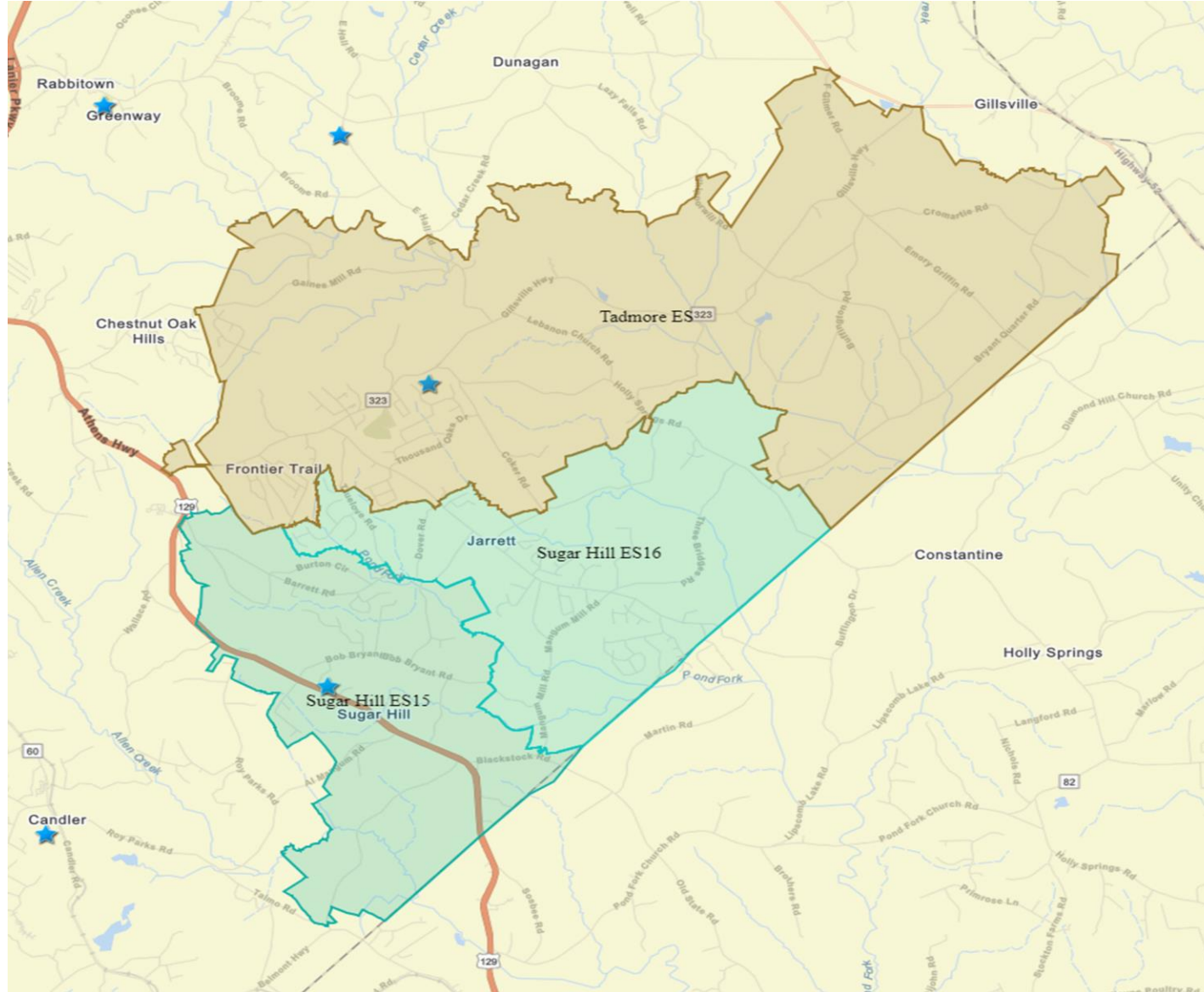
75 Students from Myers Elementary to Sugar Elementary

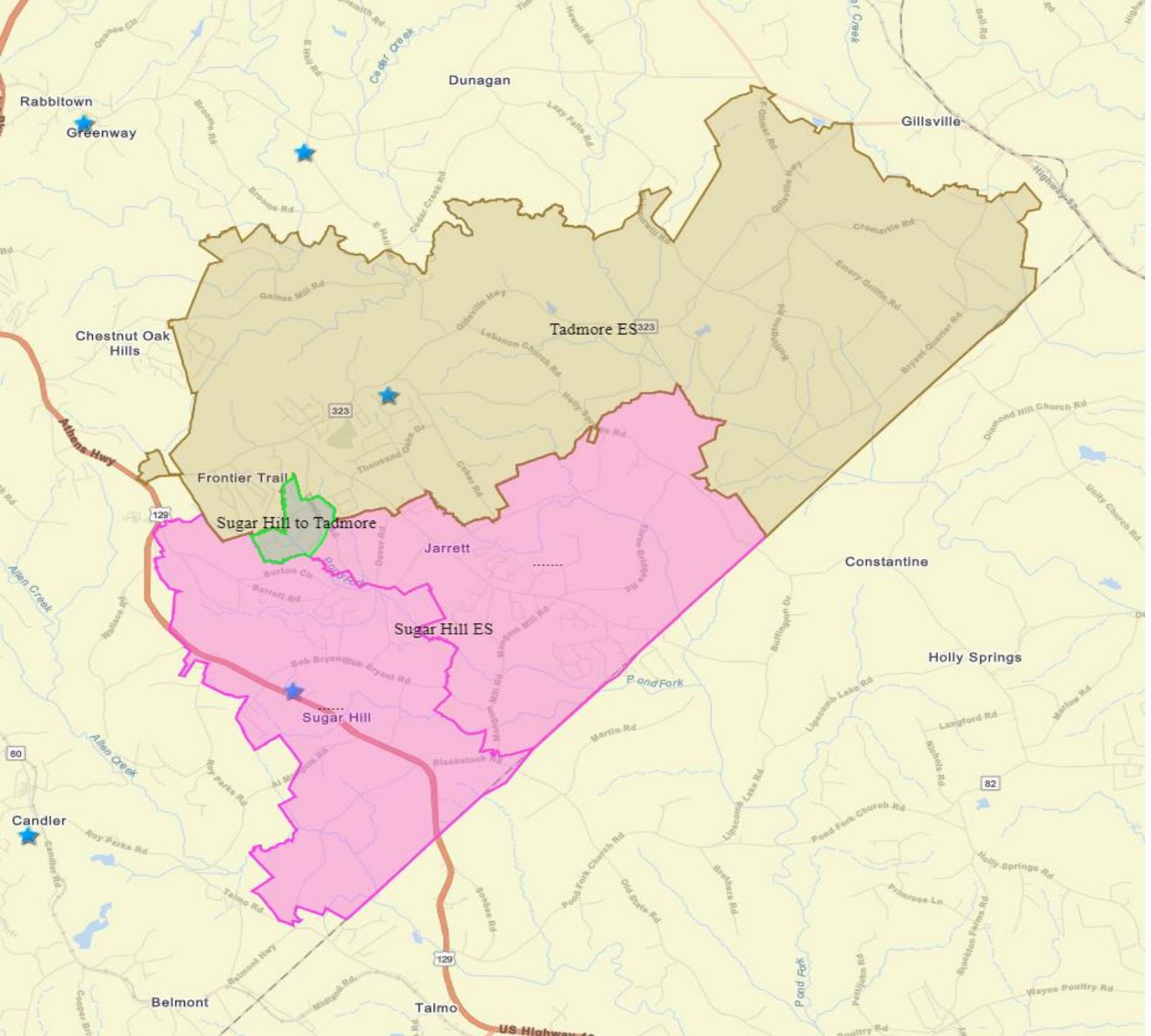
- Sugar Hill ES Capacity: 800
- Sugar Hill Current Enrollment: 653



New Sugar Hill Elementary and Myers Elementary School Attendance Zones

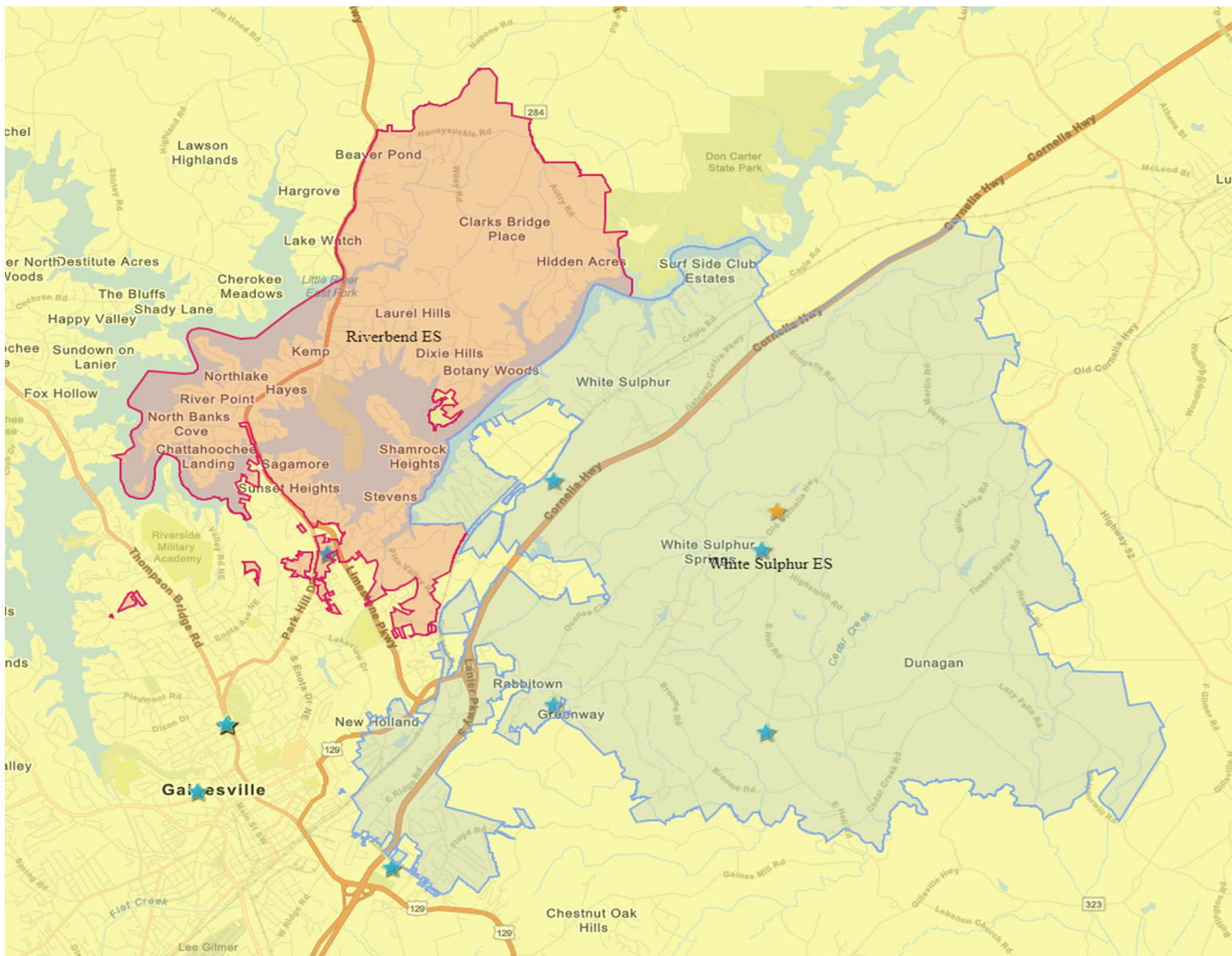
Current Tadmore Elementary and Sugar Hill Elementary School Student Attendance Zones

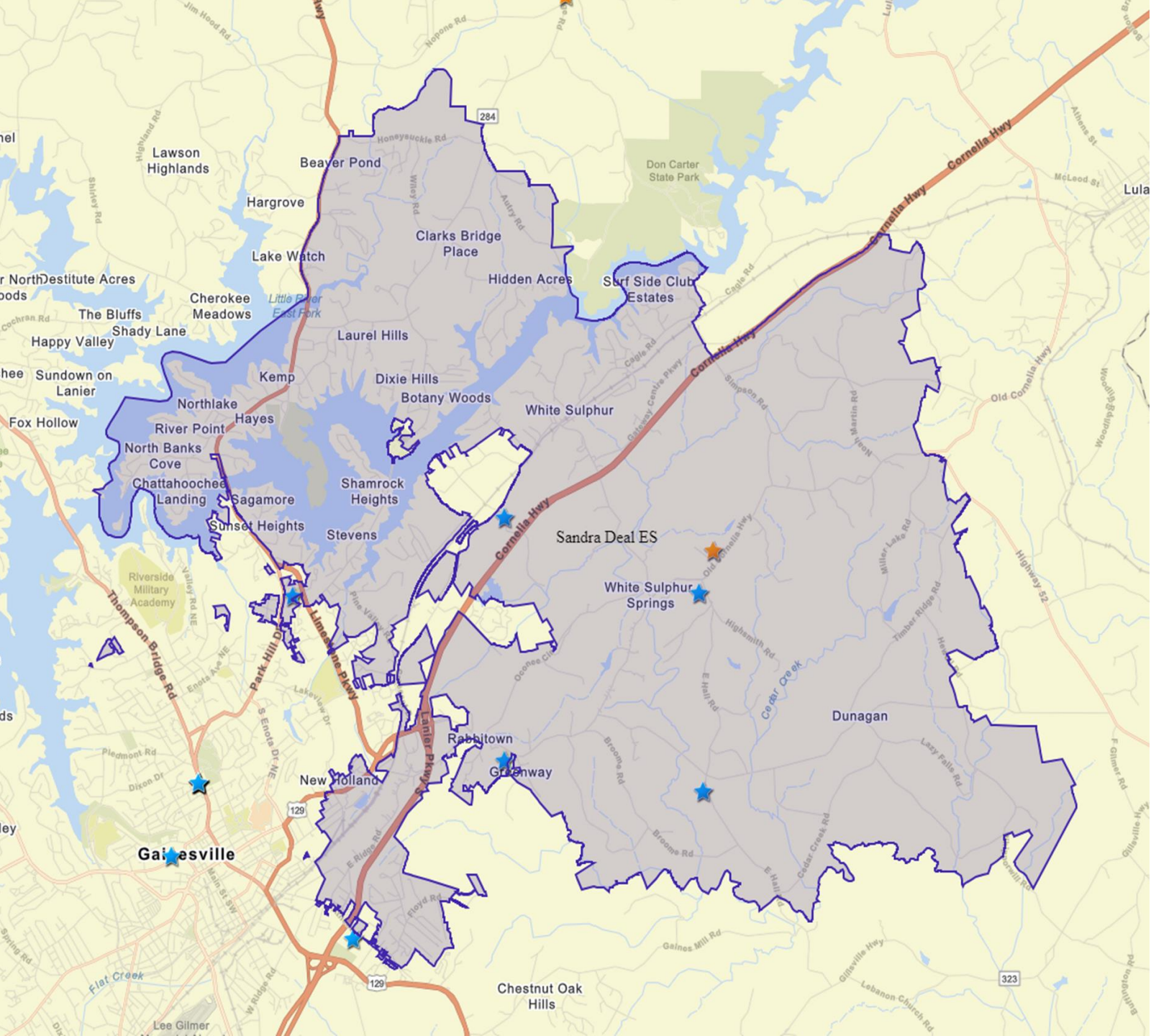




New Sugar Hill Elementary and Tadmore Elementary School Attendance Zones


Current Riverbend Elementary and White Sulphur Elementary School Student Attendance Zones





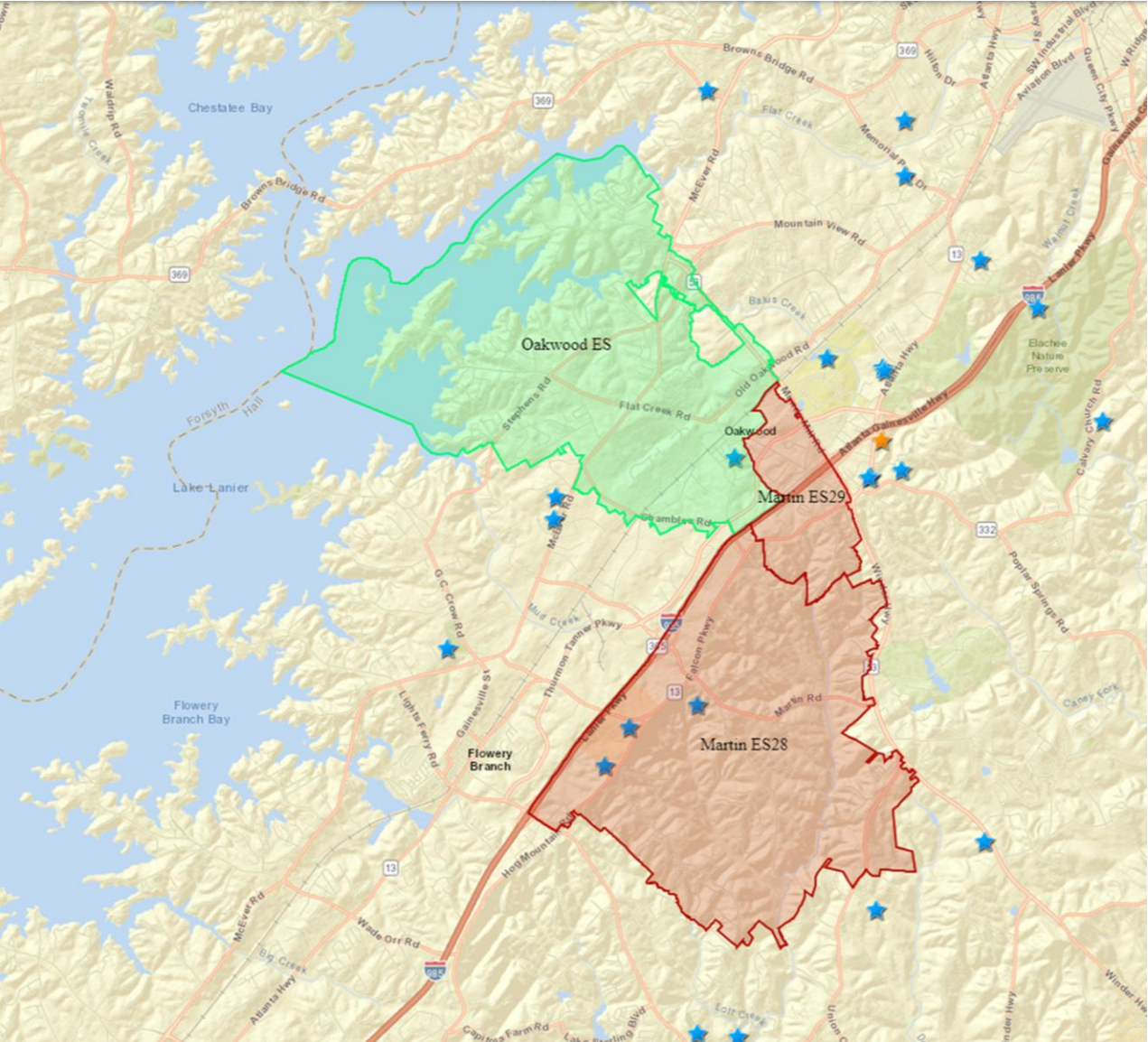
775 Students from Riverbend Elementary and White Sulphur Elementary to Deal Elementary

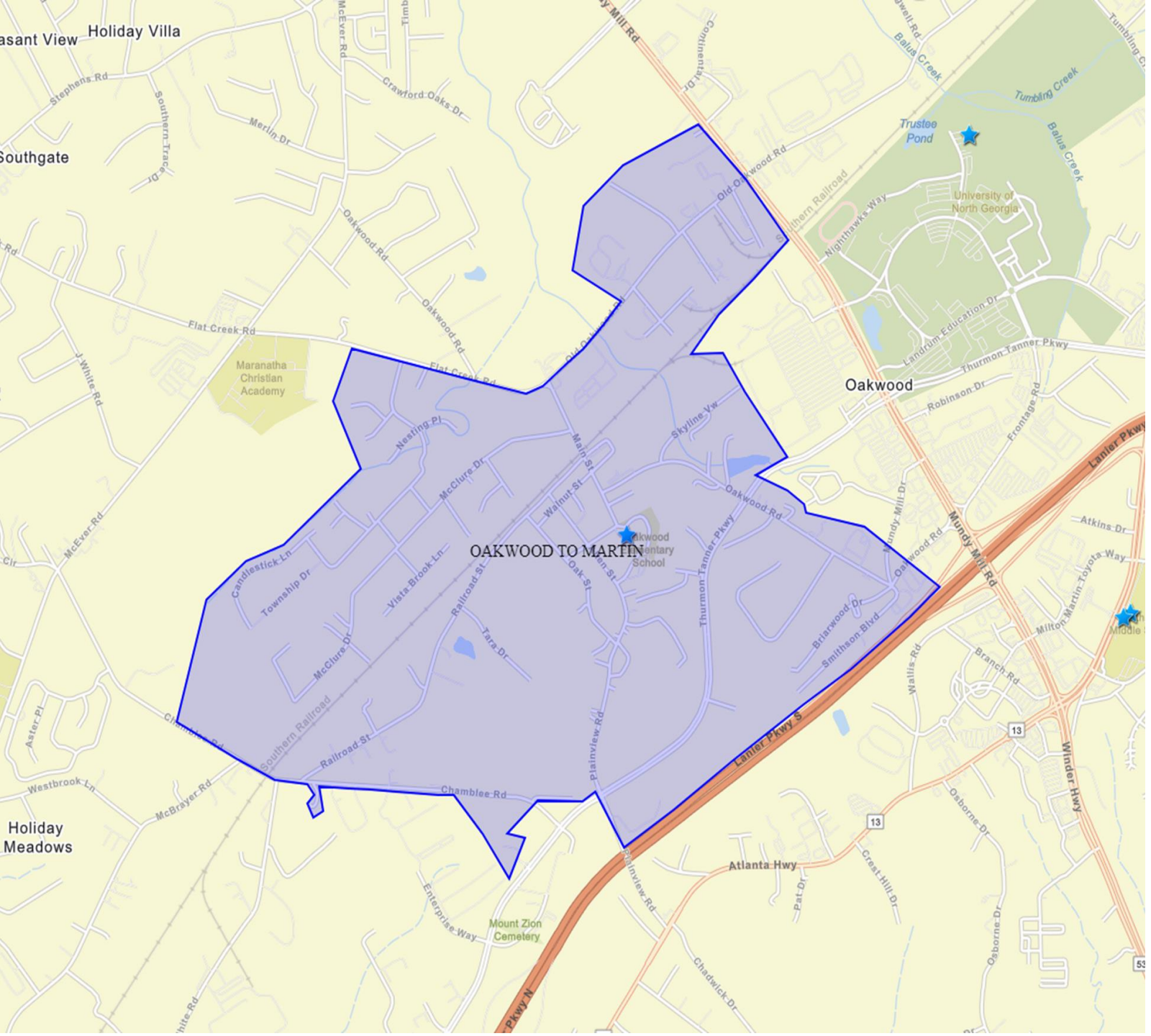
- Sandra Dunagan Deal
Elementary
School Capacity: 1025



Effective 2025-2026 School Year

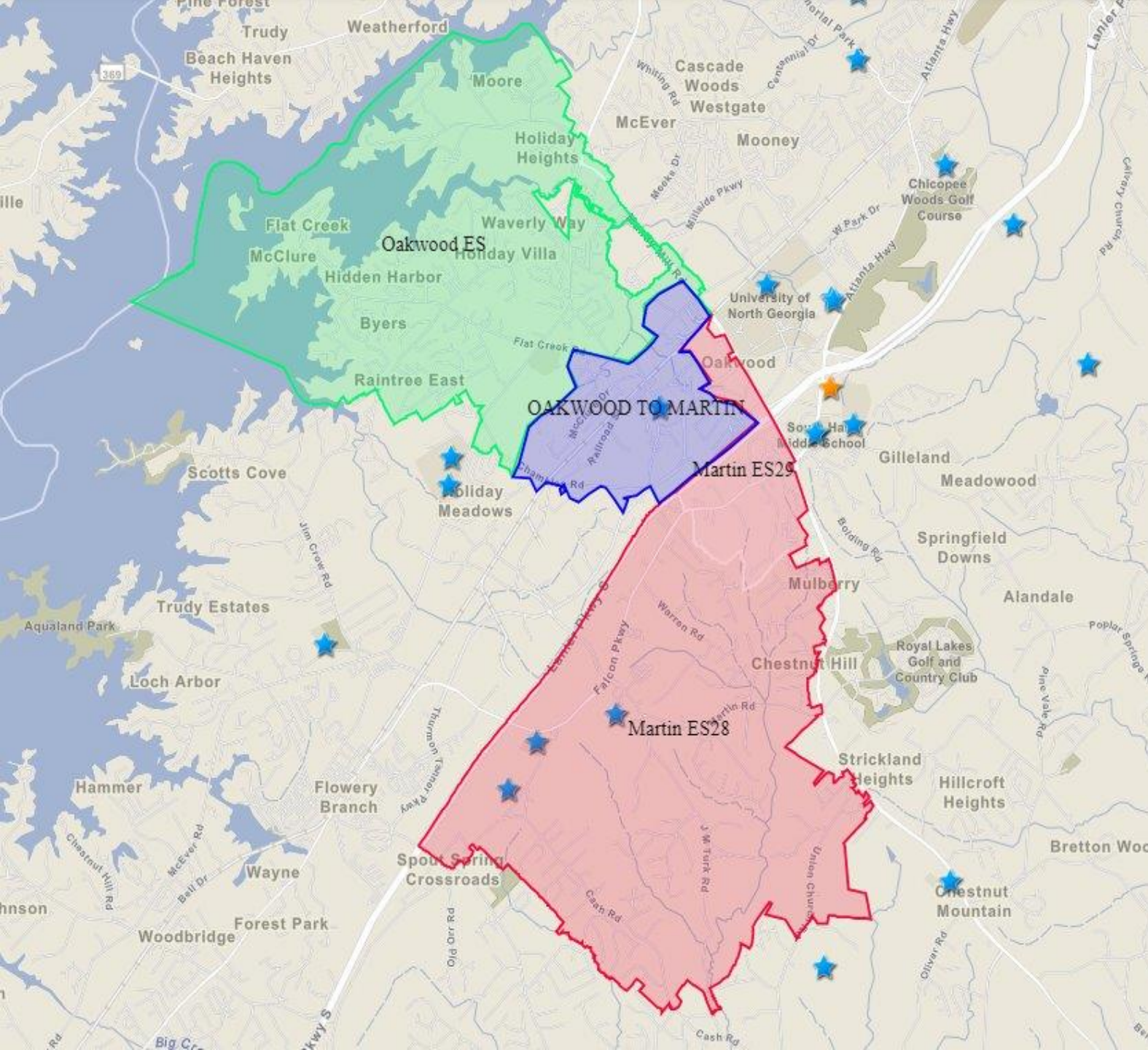
Current Oakwood Elementary and Martin Elementary School Student Attendance Zones





118 Students from Oakwood Elementary to Martin Elementary

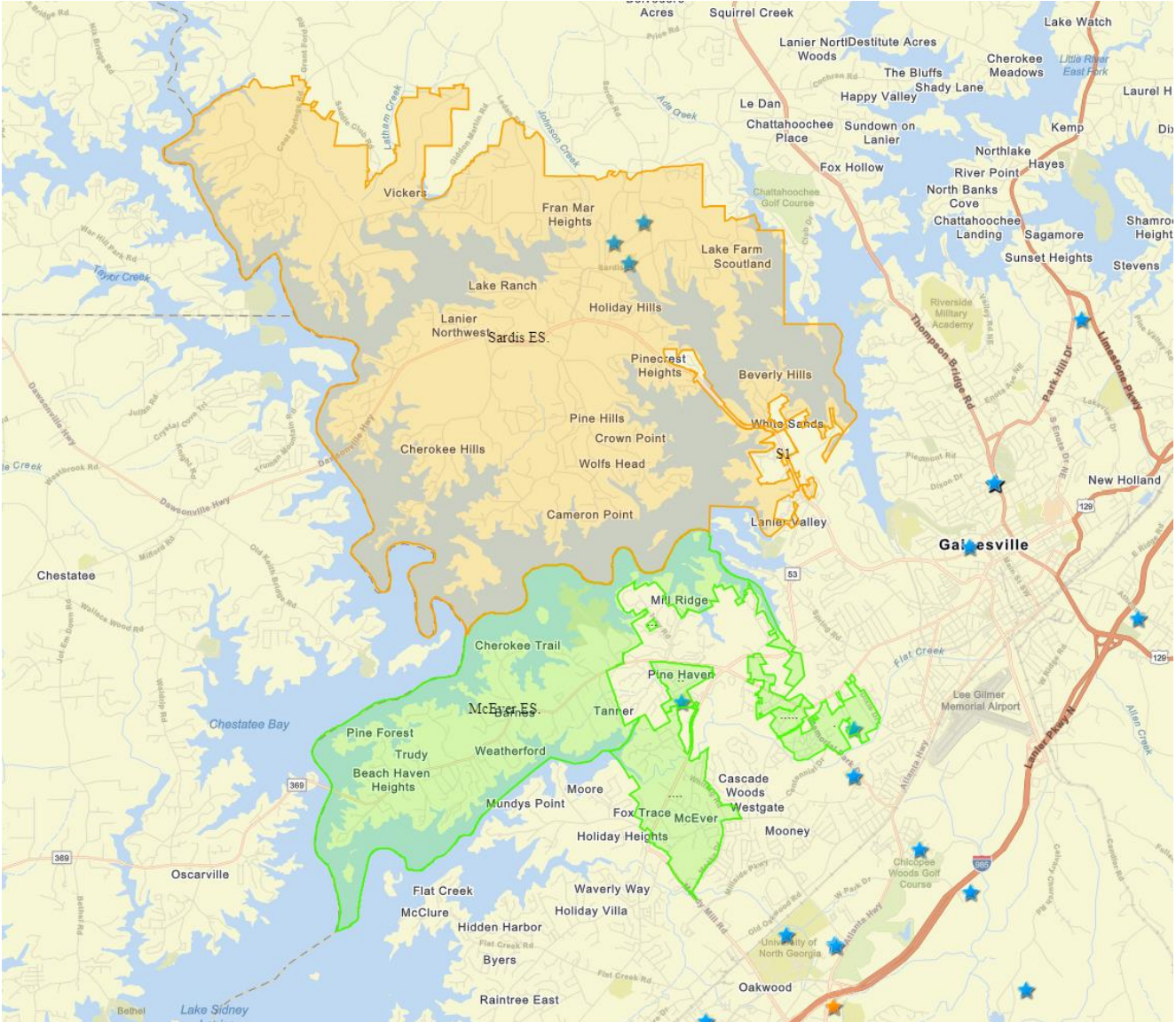
- Martin ES Capacity: 825
- Martin ES Current Enrollment: 618

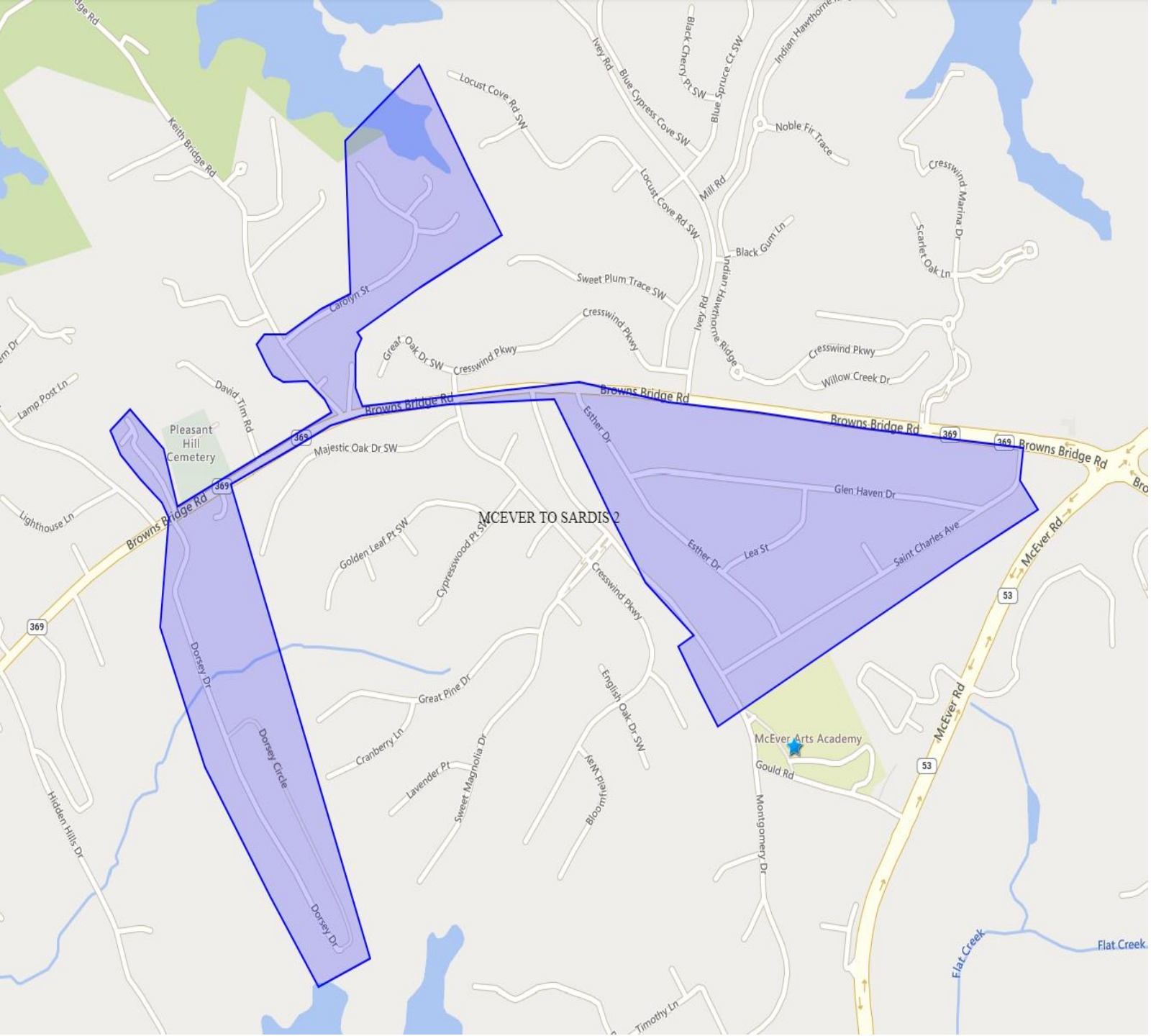


New Oakwood Elementary and Martin Elementary School Attendance Zones

(Effective 2025-
2026 School Year)

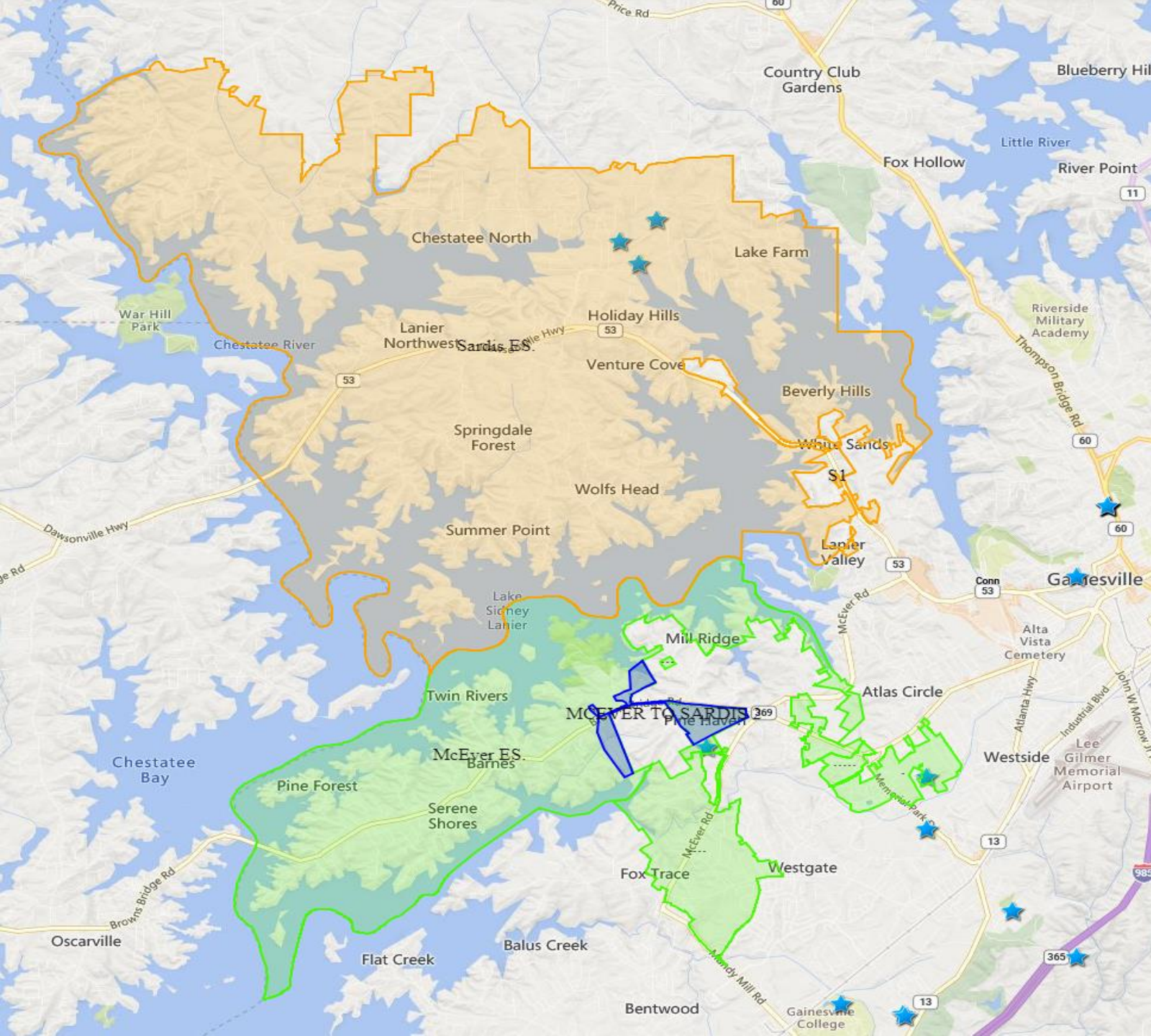
Current McEver Elementary and Sardis Elementary School Student Attendance Zones





79 Students from McEver Elementary to Sardis Elementary

- Sardis ES Capacity: 750
- Sardis ES Current Enrollment: 550



New Sardis Elementary and McEver Elementary School Attendance Zones

(Effective 2025-
2026 School Year)



Hall County Schools

CHARACTER • COMPETENCY • RIGOR

FOR ALL